

Outline

VISUAL REHAB FOLLOWING A NEUROLOGICAL EVENT

- Red flags
- Sequence of action
- When should you refer?
- Relationship of eye/brain anatomy to perception/processing

DIAGNOSIS: VISUAL ACUITY & VISUAL FIXATION

- Screening methods
- Treatment and compensation strategies
- Visual fixation for the low functioning client
- Advanced technology options

DIAGNOSIS: OCULAR MOTOR ALIGNMENT & DEPTH PERCEPTION

- Determine the diagnosis
- Cover/uncover test
- Assessment, demonstration & lab practice
- Establish treatment protocols

Who Should Attend

- Occupational Therapists
- Certified Occupational Therapy Assistants
- Physical Therapists
- Physical Therapist Assistants
- Speech-Language Pathologists
- Audiologists
- Nurse Practitioners
- Physician Assistants
- Nurses

What to Bring

- Please bring colored pencils, markers, or highlighters.

Live Seminar Schedule

**7:30:** Registration/Morning Coffee & Tea  
**8:00:** Program begins  
**Lunch:** 1 hour (on your own)  
**3:30:** Program ends

There will be two 15-min breaks (mid-morning & mid-afternoon).  
Actual lunch and break start times are at the discretion of the speaker.  
A more detailed schedule is available upon request.

DIAGNOSIS: VISUAL FIELD CUT

- Anatomical review of the visual pathway
- Determine the diagnosis
- Assessment, demonstration & lab practice
- Peripheral test
- Confrontation test
- Establish treatment protocols

DIAGNOSIS: HEMI-SPATIAL NEGLECT & PUSHER SYNDROME/MIDLINE ORIENTATION SHIFT

- Determine the diagnosis
- Differentiate between cut and neglect
- Why is left neglect more common than right?
- Assessment, demonstration & lab practice
- Simultaneous stimulus test
- Pencil and paper screeners
- Neuro handling principles
- Positioning strategies to rehabilitate
- Establish treatment protocols

DOCUMENTATION & ADVOCACY FOR COVERAGE

- Objective data to incorporate
- Demonstrating improvement
- Develop goals for justification

REHAB SUMMIT

LAS VEGAS

July 29–August 1, 2020

rehabsummit.com



HAVE A SEMINAR IDEA?  
A MANUSCRIPT TO PUBLISH?

The nation's top speakers and authors contact PESI first. If you are interested in becoming a speaker or have a new topic idea, please contact Orion Tarpley at [otarpley@pesi.com](mailto:otarpley@pesi.com) or 715-855-5262.

FREE  
- CE -  
ONLINE COURSE

Introductory  
Survival Spanish  
for Healthcare Providers

Up to 1 CE HOUR

HURRY OFFER EXPIRES  
October 15, 2019

rehab.pesi.com/freespanish

Bring any training  
in-house!



Convenient • Cost-Effective • Customizable

for more information visit  
[www.pesirehab.com/inhouse](http://www.pesirehab.com/inhouse)

NON-PROFIT  
ORGANIZATION  
US POSTAGE PAID  
EAU CLAIRE WI  
PERMIT NO 32729

PESI Rehab  
P.O. Box 1000  
Eau Claire, WI 54702-1000  
A division of PESI, Inc.

Visual Rehab After  
Neurological Events

Seeing the World Through New Eyes



Ronkonkoma, NY  
Thursday  
November 7, 2019

Manhattan, NY  
Friday  
November 8, 2019

REGISTER NOW: [pesirehab.com/express/73577](http://pesirehab.com/express/73577)



Visual Rehab After  
Neurological Events

Seeing the World Through New Eyes



Advance your skills with intensive lab sessions

- Differentiation challenges addressed – is it a field loss or neglect?
- Strategies to achieve functional improvements for stroke/TBI clients
- Documentation tips to justify the need for continued treatment
- Evaluation skills for ocular motor skill impairment, visual field loss, visual spatial inattention & pusher syndrome/midline orientation shift
- Recommend interventions for ocular motor, field cut and neglect
- Low and no cost intervention options - for any setting

Ronkonkoma, NY  
Thursday  
November 7, 2019

Manhattan, NY  
Friday  
November 8, 2019

 PESI<sup>®</sup>  
Rehab

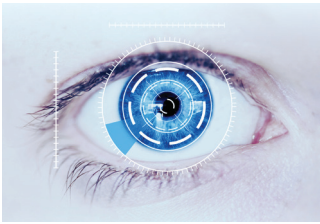
REGISTER NOW: [pesirehab.com/express/73577](http://pesirehab.com/express/73577)

A NON-PROFIT ORGANIZATION CONNECTING KNOWLEDGE WITH NEED SINCE 1979



Visual Rehab After  
Neurological Events

Seeing the World Through New Eyes



- Feeling lost in determining a treatment plan with a neurological client? Have you asked yourself:
- What is the best evidence-based therapy protocol?
  - How do you know if you are facing a field loss or a neglect?
  - How do you determine visual function when your client is confused?
  - Is this a vision or cognitive impairment?

Michelle has been in that fog and come out the other side with wonderful, functional, and cost-consciousness options to show and share. She sustains that therapy should be specific to the client’s challenge and that requires an astute awareness of the impairment. This insight comes from clear assessments that are revealed in this course, along with functional treatment interventions to ensure successful therapy sessions. Michelle shares anecdotes and case studies that highlight how the protocols can be put in to practice. These stories assist in enlightening the inexperienced therapist and commiserating with the experienced therapist. The course content is largely interactive and offers numerous lab sessions proving the engaging experience that therapists crave!

Speaker



**MICHELLE MIODUSZEWSKI, MS, OTR/L**, has been practicing occupational therapy in acute, inpatient rehabilitation, and outpatient settings through her career. Visual rehabilitation following neurological events has been an area of focus. Michelle owns and operates Niagara Therapy, LLC, a team-oriented practice based in Erie, PA that offers OT, PT, and SLP to adults and children with neurological concerns. She also consults for legal, education, and professional situations.

Michelle is the AOTA Administration and Management Chairperson for the Rehabilitation and Disability Special Interest Section, National MS Society Board of Trustees, and is a National MS Society Partner in Care Designation. She was trained in NDT and NEURO-IFRAH (NDTC), Bioness Certified, REO Certified, SAEBO Certified, and specialized in vision and cognitive rehabilitation. A published writer by AOTA Press, she also teaches on topics such as IASTM, Neuro-Rehab/Neuro-Handling, vision, cognition, spasticity, ergonomics and complex wheelchair evaluations.

Speaker Disclosures:  
Financial: Michelle Mioduszewski is the owner of Niagara Therapy, LLC. She receives a speaking honorarium from PESI, Inc.  
Non-financial: Michelle Mioduszewski is the AOTA Administration and Management Chairperson for the Rehabilitation and Disability Special Interest Section; and the National MS Society Board of Trustees.

Objectives

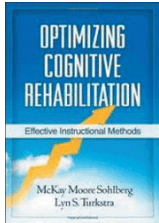
- Articulate an understanding of vision-based rehabilitation and the rehabilitation process.
- Articulate the description of ocular motor skill impairment, visual field loss, visual spatial inattention and midline syndrome.
- Demonstrate competent assessment of ocular motor skills, visual field loss, visual spatial inattention and midline syndrome.
- Discuss the difference between field impairment and neglect.
- Prescribe treatment interventions for ocular motor skills, visual field loss, visual spatial inattention and midline syndrome.
- Demonstrate effective documentation of assessment and intervention to justify skilled services.

**Hassle-Free Cancellation Policy:** If you contact us before the event date, you can exchange for a DVD on the subject (self-study continuing education credit may be available), a certificate to attend another seminar, or receive a tuition refund less a \$30 cancel fee. Substitutions are permitted at any time.

**Seminar on DVD Package:** You can purchase a self-study package on the subject. You will receive a set of DVDs that include a digital copy of the seminar manual and post-test/evaluation. You and your colleagues can receive CE hours for a nominal fee. To determine if homestudy credits are available for your profession go to [www.pesirehab.com](http://www.pesirehab.com) or call 800-844-8260. Check with your licensing board to verify acceptance of self-study credits for license renewal. Order today by using the order form on this brochure or by calling 800-844-8260.



**\*Save by including this product with your seminar registration!**



Optimizing Cognitive Rehabilitation  
Effective Instructional Methods

By McKay Moore Sohlberg, PHD, CCC-SLP & Lyn S. Turkstra, PHD, CCC-SLP

Rehabilitation professionals face a key challenge when working with clients with acquired cognitive impairments: how to teach new skills to individuals who have difficulty learning. Unique in its focus, this book presents evidence-based instructional methods specifically designed to help this population learn more efficiently. The expert authors show how to develop, implement, and evaluate an individualized training plan. They provide practical guidelines for teaching multistep procedures, cognitive strategies, the use of external aids, and more. Purchasers of this title can download 19 sample worksheets and forms; blank forms provided by the publisher and are a convenient 8 1/2" x 11" size.



PESI, Inc. is proud to offer this seminar (at these locations only) *free* of charge (on live seminar tuition) for veterans and active duty military personnel. **Limited seats available; advance online registration required.**

Live Seminar Continuing Education Credit Information

*Credits listed below are for full attendance at the live event only. After attendance has been verified, pre-registered attendees will receive an email from PESI Customer Service with the subject line, "Evaluation and Certificate" within one week. This email will contain a link to complete the seminar evaluation and allow attendees to print, email or download a certificate of completion if in full attendance. For those in partial attendance (arrived late or left early), a letter of attendance is available through that link and an adjusted certificate of completion reflecting partial credit will be issued within 30 days (if your board allows). Please see "LIVE SEMINAR SCHEDULE" on this brochure for full attendance start and end times. NOTE: Boards do not allow credit for breaks or lunch.*

*If your profession is not listed, please contact your licensing board to determine your continuing education requirements and check for reciprocal approval. For other credit inquiries not specified below, or questions on home study credit availability, please contact [cepesi@pesi.com](mailto:cepesi@pesi.com) or 800-844-8260 before the event.*

*Materials that are included in this course may include interventions and modalities that are beyond the authorized practice of mental health professionals. As a licensed professional, you are responsible for reviewing the scope of practice, including activities that are defined in law as beyond the boundaries of practice in accordance with and in compliance with your profession's standards.*

*PESI, Inc. offers continuing education programs and products under the brand names PESI, PESI Healthcare, PESI Rehab and Psychotherapy Networker.*

**Nurses, Nurse Practitioners, and Clinical Nurse Specialists:** PESI, Inc. is accredited as a provider of continuing nursing education by the American Nurses Credentialing Center's Commission on Accreditation.

Nurses in full attendance will earn 6.0 contact hours. Partial contact hours will be awarded for partial attendance.

**Occupational Therapists & Occupational Therapy Assistants:** PESI, Inc. is an AOTA Approved Provider of continuing education. Provider #: 3322. Full attendance at this course qualifies for 6.0 contact hours or .6 CEUs in the Category of Domain of OT and Occupational Therapy Process. Partial credit will be issued for partial attendance. The assignment of AOTA CEUs does not imply endorsement of specific course content, products, or clinical procedures by AOTA. Course Level: Intermediate.


**Physical Therapists & Physical Therapist Assistants:** This activity consists of 6.0 clock hours of instruction that is applicable for physical therapists. CE requirements for physical therapists vary per state/jurisdiction. Please retain the certificate of completion that you receive and use as proof of completion when required.

**New Jersey Physical Therapists & Physical Therapist Assistants:** This course has been approved by the New Jersey Board of Physical Therapy Examiners for 6.25 credits. Board Course Number: 1905-55.

**New York Physical Therapists & Physical Therapist Assistants:** PESI, Inc. is recognized by the New York State Education Department, State Board for Physical Therapy as an approved provider for physical therapy and physical therapy assistant continuing education. This course qualifies for 7.2 Contact Hours.

**Physician Assistants:** This program has been reviewed and is approved for a maximum of 6.0 hours of clinical Category I CME credit by the American Academy of Physician Assistant Review Panel. Physician assistants should claim only those hours actually spent participating in the CME activity. This program was planned in accordance with AAPA's CME Standards for Live Programs and for Commercial Support of Live Programs.

APPROVED PROVIDER



ASHA  
CONTINUING  
EDUCATION  
AMERICAN SPEECH-LANGUAGE-HEARING ASSOCIATION

PESI, Inc. is approved by the Continuing Education Board of the American Speech-Language-Hearing Association (ASHA) to provide continuing education activities in speech-language pathology and audiology. See course information for number of ASHA CEUs, instructional level and content area. ASHA CE Provider approval does not imply endorsement of course content, specific products or clinical procedures.

**Audiologists:** This course is offered for .6 ASHA CEUs (Intermediate level, Related area).

**Audiologists only:** To be reported to ASHA, while completing the online post-test/evaluation, please answer YES to the question: "Are you a Speech-Language Pathologist and/or Audiologist requesting to have your credit hours reported to the ASHA CE Registry to earn ASHA CEUs?" and include your ASHA number. After completing and passing the online post-test/evaluation, your information will automatically be sent to [cepesi@pesi.com](mailto:cepesi@pesi.com) to be reported. If you forget to answer yes, please send an email to [cepesi@pesi.com](mailto:cepesi@pesi.com) with the following information: full title of the activity, speaker name, date of live broadcast, date you completed the post-test, and your name and your license number.

**Speech-Language Pathologists:** This course is offered for .6 ASHA CEUs (Intermediate level, Related area).

**Speech-Language Pathologists only:** To be reported to ASHA, while completing the online post-test/evaluation, please answer YES to the question: "Are you a Speech-Language Pathologists and/or Audiologist requesting to have your credit hours reported to the ASHA CE Registry to earn ASHA CEUs?" and include your ASHA number. After completing and passing the online post-test/evaluation, your information will automatically be sent to [cepesi@pesi.com](mailto:cepesi@pesi.com) to be reported. If you forget to answer yes, please send an email to [cepesi@pesi.com](mailto:cepesi@pesi.com) with the following information: full title of the activity, speaker name, date of live broadcast, date you completed the post-test, and your name and your license number.

**Other Professions:** This activity qualifies for 360 minutes of instructional content as required by many national, state and local licensing boards and professional organizations. Save your course outline and certificate of completion, and contact your own board or organization for specific requirements.

How to Register

VISUAL REHAB AFTER NEUROLOGICAL EVENTS: SEEING THE WORLD THROUGH NEW EYES  
Questions? Visit [www.pesirehab.com/faqs](http://www.pesirehab.com/faqs), or call 800-844-8260

ONLINE  
[pesirehab.com/express/73577](http://pesirehab.com/express/73577)

PHONE  
800-844-8260  
Please have credit card available

FAX  
800-554-9775

MAIL  
PESI Rehab  
PO Box 1000  
Eau Claire, WI  
54702-1000

2 Check location: (make copy of locations)

☐ **RONKONKOMA, NY**  
**November 7, 2019** 73577RON  
Courtyard Long Island MacArthur Airport  
5000 Express Drive South • 11779  
(631) 612-5000

☐ **MANHATTAN, NY**  
**November 8, 2019** 73577NYO  
Martinique New York  
49 W 32nd St • 10001  
(212) 736-3800

Register now!  
[pesirehab.com/express/73577](http://pesirehab.com/express/73577)

**ADA NEEDS**

We would be happy to accommodate your ADA needs; please call at least two weeks prior to the seminar date.

**WALK-INS**

Walk-ins are welcome but admission cannot be guaranteed. Call M-F 7:00-6:00 Central Time for space availability if registering within one week of seminar.

**TUITION OPTIONS**

- **FREE Military Tuition:** PESI, Inc. is proud to offer this seminar (at these locations only) free of charge (on live seminar tuition) for veterans and active duty military personnel. *Limited seats available; advance online registration required.*
- **\$30 Tuition:** If you are interested in being our registration coordinator for the day, go to: [www.pesirehab.com/coord](http://www.pesirehab.com/coord) for availability and job description, or call our Customer Service Dept. at 800-844-8260.
- **Groups of 10 or more:** Call 800-844-8260 for discounts.
- **Discounted Student Rate:** As part of its mission to serve educational needs, PESI, Inc. offers a reduced rate of 50% off standard tuition for students. Enclose a current student schedule with registration form. Go to [www.pesirehab.com/faqs](http://www.pesirehab.com/faqs) or call 800-844-8260 for details. *Advance registration required. Cannot be combined with other discounts.*

1 Please complete entire form (to notify you of seminar changes):  
please print; staple duplicate forms.

Mail Code: \_\_\_\_\_  
See mail code box on address panel on reverse side

Name \_\_\_\_\_ Profession \_\_\_\_\_

Employer Name \_\_\_\_\_

Employer Address \_\_\_\_\_

Dept/Floor/Suite \_\_\_\_\_

City \_\_\_\_\_ County \_\_\_\_\_

State \_\_\_\_\_ Zip \_\_\_\_\_

Home/Cell Ph (     ) \_\_\_\_\_

Dept. Ph (     ) \_\_\_\_\_

\*E-mail address \_\_\_\_\_

\*Registrant's e-mail is required to receive your certificate of completion and registration confirmation.

3 Check tuition:

**Tuition with seminar manual**

**\$209.99** – choose one of the options below:

- ☐ per person for 2 or more preregistering together —OR—
- ☐ single registration postmarked 3 weeks prior to seminar date

☐ **\$229.99** standard

**Add-On Product**

Distributed at seminar—FREE SHIPPING!

☐ **\$57.00\* Optimizing Cognitive Rehabilitation** book

\*Attendees add applicable state and local taxes except in AK, DE, MT, NH, OR

4 Indicate method of payment:

ALL REGISTRATIONS MUST BE PREPAID.  
Purchase orders welcome (attach copy).

☐ Check enclosed payable to **PESI, Inc.**

☐ MC 16 digits    ☐ VISA 13-16 digits    ☐ AE 15 digits    ☐ Discover Novus 16 digits

Card # \_\_\_\_\_

Card Exp. \_\_\_\_\_ V-Code #\*: \_\_\_\_\_

Signature \_\_\_\_\_

(\*MC/VISA/Discover: last 3-digit # on signature panel on back of card.)  
(\*American Express: 4-digit # above account # on face of card.)

CAN'T ATTEND THE SEMINAR? See below for individual product orders	
<b>Visual Rehab After Neurological Events: Seeing the World Through New Eyes</b>	
____ Seminar on DVD* \$219.99 (RNV020696)	
____ <b>Optimizing Cognitive Rehabilitation</b> book* \$57.00 (SAM074335)	
CE hours and approvals on products may differ from live CE approvals.	Product total \$ _____
*Shipping is \$6.95 first item + \$2.00 each add'l item.	*Shipping _____
**Residents add applicable state and local taxes except in AK, DE, MT, NH, OR	<b>Subtotal</b> _____
	<b>**Tax</b> _____
	<b>TOTAL</b> _____

FOR OFFICE USE ONLY

OT

Fed ID # 26-3896894 © 2019 PESI, Inc.